

# The Good News

St. Luke Lutheran Church



## St. Luke Happenings!

*Join Us for*  
**WORSHIP**

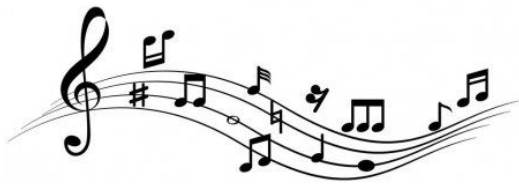
### St. Luke Worship Schedule

Sunday Worship 9:30AM  
and live on our Facebook page

Wednesdays at Zion Church 7PM  
(through August 21st)  
18910 360<sup>th</sup> St. Goodhue

### Zion Worship in August

August 7: Susie Matthees Preaching  
August 14: Nicole Wananda Preaching  
August 21: Following Jesus Amidst Doubt



### Choir Workshop

All are invited to a workshop to learn about and work on some beautiful choral pieces. The workshop will be at St. Luke Church on Saturday, August 24, 2024 from 9-3pm. If you would like details about that day or have questions contact Debbi St. John or the church office.

### Pastor Vacation in August

Pastor Eric will be on vacation August 3-14th. Rev. Hannah Bergstrom de Leon will be covering emergencies while Pastor Eric is away. Her contact number is: 507-218-9063.



### Remember in Prayer...



Keith Brown, Jan Benidt, Dave (Pud) Gnotke, Shawn Fredrixon, Marc Bode, Julie Marklevits, Harlan Reese, Beth Carlson, Gage Miller, Alex Stehr, Maria Starr Quiggle, Perry Fitzgerald, Tanya Bakken, Lorraine Hinsch, and Alan Mollenhauer

### Those recently baptized:

Charlotte Beatrice Turini, the daughter of Brandi & Damien Turini

Mara Mae O'Reilly, the daughter of Afton & John O'Reilly

Jubilee Jordan Wananda, the daughter of Nicole and Joe Wananda

### Take a Pew & Help Move Chairs

On Sunday, August 18th after worship we'll move our remaining chairs into the sanctuary. St. Luke families are welcome to take a pew if they'd like. The pews may be taken free of charge but free will donations are invited that will go toward our Forward In Faith Building Fund. There are 22 pews in the sanctuary available to be taken. If there is an abundance of interest in the pews, we will have a lottery to determine recipients. The lottery will happen on August 11th, so please register your interest in taking a pew with Tara Marklevits via email ([office@stlukegoodhue.org](mailto:office@stlukegoodhue.org)) by the morning of August 11th. One pew will be allotted per household at this time. On August 18th, recipients of the pews are responsible for transportation of pews from church to home. People will be on hand to help carry pews to vehicles from 11am to 1pm on August 18th.

# Schedules & Events

---

## Offering Counting Schedule

August 4: Kelly and Sheila  
August 11: Holly and Sharon  
August 18: Angela and Lisa  
August 25: Sheri and Mitch

## Altar Care

Tris Danielson &  
Melanie Hinsch



## Prayer Reading Schedule



August 4: Tom Voth  
Wed, August 7: Todd Budensiek  
August 11: Jon Roschen  
Wed, August 14: Tris Danielson  
August 18: Renee Hadler  
Wed, August 21: Eve Stone  
August 25: Amie Tipton



## Church Council Meeting NOTE: Date/Time Change

Church council will meet on August 19th at 7pm in the church Gathering Room. All are welcome to join. Let the office know if you have an item to add to the agenda.

## Council Sunday Communion Assistants

August 18: Maggie & Scott  
August 25: Mitch & Dawn

## Ushering Schedule

August 4: Jim & Vickie Mollenhauer  
August 7 Zion 7pm: Brad and Amanda Roschen  
August 11: Jim & Vickie Mollenhauer  
Aug. 14 Zion 7pm: Michelle Anderson & Tracey Stehr  
August 18: Holly & Dave Roschen  
August 21 Zion 7pm: Brad and Amanda Roschen  
August 25: Jim & Vickie Mollenhauer

## Tech Team Schedule

August 4: Izzy O'Reilly  
August 11: Tomas Ryan  
August 18: Murphy Voth  
August 25: Izzy O'Reilly

## Contemporary Band Practice

Every Wednesday evening at 5:30pm there will be Contemporary Band practice at St. Luke Church. If you have a talent and would like to join us please come join practice at anytime! Contact Debbi St. John or the church office with questions.

## A/V Schedule

August 4: Nicole Horsman  
August 11: Nicole Horsman  
August 18: Steve Voth  
August 25: Mel Kurtti

## SE MN Synod Church Wide Theology Pub

Ever want to talk with other people of faith about cultural issues that matter? Want to do it in a fun, casual setting? The Southeast Minnesota Synod of the ELCA is hosting a theology pub to provide such opportunities. Guided conversations on issues that matter will happen on August 15th (10,000 Drops Craft Distiller, Fari-bault) at 7pm. All are welcome!

## Sound Team Schedule

August 4: Cole Tousignant  
August 11: Calvin Ryan  
August 18: Collin Baska  
August 25: Craig Nord

## Pastor's Page

---

Greetings in Christ St. Luke Lutheran Church,

I hope this letter finds you participating actively, intentionally, and gratefully in God's story continually being birthed around you.

This coming fall, you'll likely notice a change in our worship life together. For the past four years—and before that, I believe—our scripture readings on Sunday morning have followed something called *The Revised Common Lectionary* (RCL). The RCL provides churches with a series of readings put together by Biblical scholars that cycle every three years. In this series of readings, a Psalm, an Old Testament reading, a New Testament reading, and a Gospel lesson are provided each Sunday for churches to use in worship. In each year of the cycle, the RCL focuses on one of the three synoptic Gospels (Matthew, Mark, or Luke). The Gospel of John is peppered in periodically in all three years. In this way, the RCL gives Christians a good overview of the Biblical story over a three-year period. The disadvantage to the RCL is that it is very New Testament focused which means there are numerous Biblical stories from the Old Testament that never “make the cut” to be included in the cycle, leaving large chunks of scripture untouched by Sunday worshippers.

In 2010, a couple of professors from Luther Seminary in St. Paul, MN developed an alternative lectionary (cycle of readings) that aimed to do two things; 1) include lesser-known stories of the Bible, especially stories from the Old Testament and 2) provide a more linear, narrative overview of the Biblical story from Genesis to Revelation on an annual basis. This lectionary is called *The Narrative Lectionary*. Many ELCA churches have used it to enhance Biblical learning in congregations who have been steeped in the RCL for years and might do well to experience other corners of scripture left relatively untouched.

This coming September, beginning on Rally Sunday (September 8<sup>th</sup>), St. Luke will utilize the Narrative Lectionary for our Sunday morning readings. For nine months our readings will take us through the entire sweep of the Biblical story from Creation through the activities of the early, New Testament Church. Also, in order to bolster this more linear, narrative approach to reading scripture, the Narrative Lectionary provides one text to focus on per Sunday. During the summer months, the Narrative Lectionary takes a break and churches are free to focus on sermon series that may intentionally respond to a community's specific spiritual needs and/or curiosities. This three-month flexibility to do more creative things in preaching and teaching during the summer months is also an advantage to the Narrative Lectionary.

I hope you enjoy, along with me, the new nooks and crannies into scripture this journey will take us. If you haven't heard strange Biblical names like Mahershalalhashbaz (the longest personal name in the Bible), Ahaseurus (100 pastor bucks for whoever can pronounce that name!), and Bebai, you're about to! If you've ever hoped to better connect God's activity at the beginning of Creation to His greatest work done for us in the person of Jesus Christ, I hope this journey helps us follow that thread more easily.

God's story that started in Genesis continues in you and me today. My hope is that the more we're able to follow God's story from Genesis to Revelation, the better we'll be able to see how God continues to write His story through us today.

God bless you all, it's a pleasure doing mission and ministry with you,

Pr. Eric Hanson



## **June 15, 2024 at 7:00PM - Council Meeting Minutes**

---

**Present: Council Members: members present--** Ben Zillgitt, Susan Majerus, Calvin Ryan, Pastor Eric Hanson, Dawn Tipcke, Maggie Voth, Scott Peterson, Charlotte Volkmann and Sara Nolte – treasurer (non-voting)

**Absent:** Kamie Lodermeier, Mitch Lindholm

- Meeting called to order by Vice President Dawn Tipcke
- Concerns and Affirmations: Perry Fitzgerald continued improvement, Odin Brinkman
- Devotions/Opening Prayer – opening prayer offered by Pastor Eric
- Motion to approve the agenda by Calvin, 2nd by Maggie; motion carried.

### **Reports:**

**Secretary's:** Motion made by Char and second by Ben to approve the secretary's report; motion carried.

**Treasurer's:** Motion made by Sue and second by Scott to approve; motion carried.

**Pastor's:** Polka service went well. Planning rally Sunday. Motion made by Scott and second by Ben to approve; motion carried.

### **Committee Reports:**

**Education & Youth:** VBS June 24 – 27. 60+ kids/night. Camp Wapo and Mission trip happening in next weeks. Jacob and Rachel will start July 28.

**Extended Ministries/Endowment/Memorial:** Dawn Tipcke, no updates

**Outreach/Evangelism:** Maggie Voth - 3 on 3 tourney over Volksfest was great, planning upcoming meeting.

**Property:** Ben Zillgitt and Calvin Ryan: Black top delayed due to rains. Long discussion regarding many issues, including entry doors, carpet, outside lights, circuit breaker in kitchen, fiber optic for hearing aids, kitchen party, and refrigerator cleaning.

**Worship and Music:** Sue Majerus – No meeting, preliminary plans for contemporary service and choir retreat.

**Stewardship:** Char Volkmann and Scott Peterson – Scott shared updates with congregation.

**Old Business/Updates:** none

### **New Business:**

**Election of 2 outgoing council members for 2024 nominating committee:** table, to appoint others to committee this year, no council members outgoing.

**St. Luke Volksfest Float:** Add to future agenda and outreach committee

**Approval of New Members:** Morgyn and Brayley Gadiant, Motion by Ben, 2<sup>nd</sup> by Calvin to approve, passed.

**Grinnell Mutual Loss Insurance Report Actions:** Reviewed issues and recommendations. Water leak sensor, AED, carpet, securing bookshelves and carts. Plans on how to address the actions needed.

**Selling Pews Plan/ Move chairs into sanctuary:** Outlined a plan of 22 pews, 1 per household, August 18, 11 – 1 PM. Free will donation to Forward in Faith fund, Set up lottery in abundance of interest.

**Recommendations to pay 30\$/hr for mowing St; Luke property.** Until landscaping, blacktop complete, Ben is mowing, still too rocky and bumpy. Discussion to be continued.

**Next Capital Campaign:** Starting conversations now, as first campaign ends in April 2025.

**Adjournment and Lord's Prayer:** Motion by Sue to adjourn the meeting, 2<sup>nd</sup> by Scott, motion carried.

**Next Meeting:** Monday, August 19, 2024 - 7:00 PM

**Respectfully Submitted,** Susan Majerus, Council Secretary

# Youth & Families

---

## August Acolytes

August 4: Micah Diercks & Katelyn Jenson

August 11: Henry Luhman & Evelyn Volkmann

August 18: Graysen Thomforde & Bianca Lindholm

August 25: Connor Dicke & Caleb Hanson



## Rally Sunday at Rosie Park

Sunday, September 8th is Rally Sunday at St. Luke this year. This is the beginning of our Sunday school year and our Blessing of the Backpacks Sunday. This year we'll be at Rosie Park again for an 8:30am potluck breakfast, followed by our Rally Sunday worship service at 9:30am in the park (weather permitting). Kids, don't forget your backpacks, and everybody, bring a blanket or lawn chair to sit on. After the worship service we'll have some time for Sunday school kids to meet their Sunday school teachers and we'll enjoy some time for games and fellowship. Join us and bring a friend!

**Thank you to everyone who made our 2024 VBS a holy success!**

## 2024 Confirmation Parents' Meeting

There is a mandatory confirmation parents' meeting on August 18th after worship in the fellowship hall for 7th and 8th grade families participating in confirmation this fall. Please let Pr. Eric know if you cannot attend.

## ABC Bible Study (Adult Bible Study Community!)

All are welcome to join us for ABC Bible study! We will meet every Sunday year round (unless noted) from 8:30-9:15am in the church Family Room. This Bible study is a great way for adults to grow in faith and life together! We will not meet on August 4th or 11th.

## Sunday School Teachers Needed

We are excitedly gearing up for another year of Sunday school, & we are seeking ministry partners to help disciple, teach, & encourage our children. Each week there will be a key Bible verse, Scripture reading, discussion questions, prayer, & a short video that goes along with the Bible story. After the lesson, the kids will have an opportunity to use their creativity & legos to build a scene from the Bible story. This part is always a lot of fun! If you are interested in serving as a Sunday school teacher, email [Nicole.c.hinsch@gmail.com](mailto:Nicole.c.hinsch@gmail.com)



# Financial Gifts

You may identify one of the following means through which you can facilitate continued generosity at any level in your ministry context.

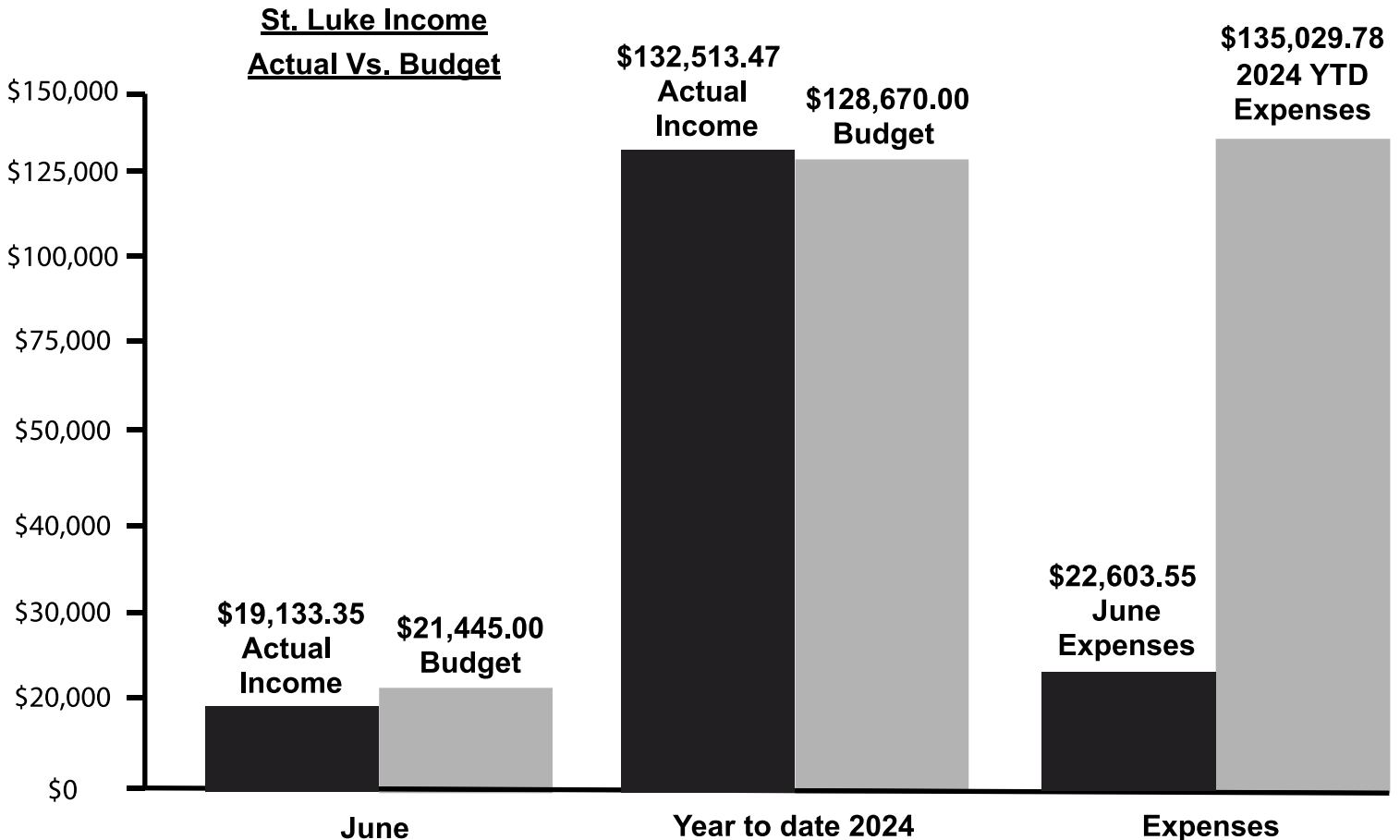
- 1) Mail a check to St. Luke Church PO Box 276 Goodhue
- 2) Consider your financial gifts through online Giving. We offer the option to give one-time or recurring gifts online through Vanco Services. Everything you need to get started can be found at <https://secure.myvanco.com/L-ZHX5> or scan this QR code with your smart phone. Detailed directions on how to give through Vanco can also be found on our website at [stlukegoodhue.org](http://stlukegoodhue.org) under the Online Giving tab.



## St. Luke YTD new building pledges VS. YTD pledge dollars received



As of July 19, 2024



## Getting to know our members! Eve Stone's Interview for St. Luke

---

From a very young age, Eve knew she loved to sing. She grew up going to First Trinity Methodist church, where she was very active in the choir. Eve and her husband Gary were married at this same church, but later moved after they graduated from college. The two of them decided to make Red Wing their home, and they purchased an abandoned farmhouse in the area; at the time this was all they could afford.

When their children reached Sunday school age and Eve's work schedule freed up a bit, they decided to seek out a new church. Eve was looking for a Biblically-based Sunday school program and a vibrant church choir. Eve remembers searching through the phone directory for churches; it was the description of St. Luke, a church of Hope and Help, which caught her eye.

Eve and her 4 year old son, Justin, attended their first service at St. Luke. Justin was a curious and precocious young boy, so he came with lots of questions. The lesson that day was about taking care of God's creation, so the pastor talked to the kids about a pet rock. Justin was intrigued. What Eve loved about that first Sunday was the liturgy, led by a small but mighty-voiced choir.

Eve and her family then joined the church, and Eve joined the choir. Eve said that St. Luke became a second home and that the members of the choir felt like family.

Eve sang with the St. Luke choir for over 20 years. The choir director was Nancy Nord, and Eve said that Nancy was always so good about finding new, inspiring music for them to sing. Eve has many cherished memories of being in the choir. It was a sad day for all when the choir sang together for the last time. Those who have been in the congregation for a long time will remember that the last St. Luke choir performance was on Pastor Mike Gustafson's first Sunday at St. Luke. The members of the choir hadn't announced their plans to retire, so they did their best to sing with joyous, welcoming voices, but many choir members left church that Sunday with tears in their eyes.

Today Eve serves on the worship and music committee and sings alongside Debbi St. John. Eve is very thankful that God has continued to bless our congregation with Spirit-filled worship leaders and song.

Sing to the Lord, for He has done wonderful things. Make known His praise around the world.  
-Isaiah 12:5

*Blessings*  
COUNT THEM ONE BY ONE

# The Gift of Giving

---

## Blessing Barn

Our Blessing Barn contains a variety of supplies and is staying at our old church location.

Take what you need and give what you can! Self care items such as deodorant, shampoo, toothbrushes/paste; cleaning items like laundry soap, dish soap; & baby care items are most needed. A collection bin is located in the narthex at church for donations.



## School Supply Drive

We are again having a school supply drive for school supplies and winter gear. A donation box will be located in the entrance of the church. The Goodhue school will take any donations, but are especially in need of: markers, notebooks, winter hats, waterproof gloves, gloves, boots, & snow pants.

## GriefShare

GriefShare is a Christian grief support group, will be beginning a new session beginning Tuesday, Sept. 10th from 6:30-8:00pm at First Covenant Church in Red Wing. Registration is appreciated so that an adequate supply of workbooks is available. Register online at [griefshare.org](http://griefshare.org) (find a group) or call Susan at 651-380-9362.

## Health Care Kit Donation

We would love to deliver more kits to the Homeless Shelters this year. You can drop your items at the church. Items needed but not limited to: Soap, Shampoo, Conditioner, Deodorant, Toothpaste, Toothbrushes, Band-Aids, Q-tips, Hairbrush, Ibuprofen, Lotion, Shaving Cream, Mouthwash, Tweezer, Nail Clipper, Vitamins, Washcloth etc.

## Helping Hands Service Team

“Helping Hands” is a group of St. Luke members ready to help members of our community who are in need of assistance due to limited resources or mobility. If you or someone you know is in need of a “Helping Hand” please contact Tara in the church office (651-998-7106, [office@stluke-goodhue.org](mailto:office@stluke-goodhue.org)) or Pr. Eric, (612-834-2149, [anspachh2002@gmail.com](mailto:anspachh2002@gmail.com)). If it is an immediate need, please contact Pastor at 612-834-2149. Examples but not limited to: grocery delivery, gutter cleaning, appt. rides, yard work, etc.

## Zumbrota Area Local Food Shelf

Donations of non-perishable foods or basic necessities are welcomed. Cash donations are also welcomed & can be placed in the offering plate during worship. A collection bin is located in the narthex at church. Hours and info is on their website: <https://www.findfoodgoodhuecounty.com/find-food-zumbrota>

## St. Luke Christian Care Team

Please send us your prayer requests through phone call, email or in-person. Our team: Susie Matthees, Sharon Pagel, Courtney Meyer, Kristin Diercks, Jennifer Rehder, Sheila Pasch, Sue Majerus, Christie Hanson, Jolene Mann, and Jacki Ebner. Ph: 651-998-7106  
Email: [careteam@stlukegoodhue.org](mailto:careteam@stlukegoodhue.org)



## Thank you

“Thank you St. Luke friends for the monetary donation to the Zumbrota Area Food Shelf. We appreciate your continued support in helping others!”

*-Zumbrota Area Food Shelf Volunteers*